

sea cucumber  
sea star

Chap 11 Sec 5



a phylum in  
animalia

echinoderm

radial symmetry

invertebrates


internal skeleton  
of fluid filled  
tubes



endo - inside  
skeleton

Chap 11 Sec 5

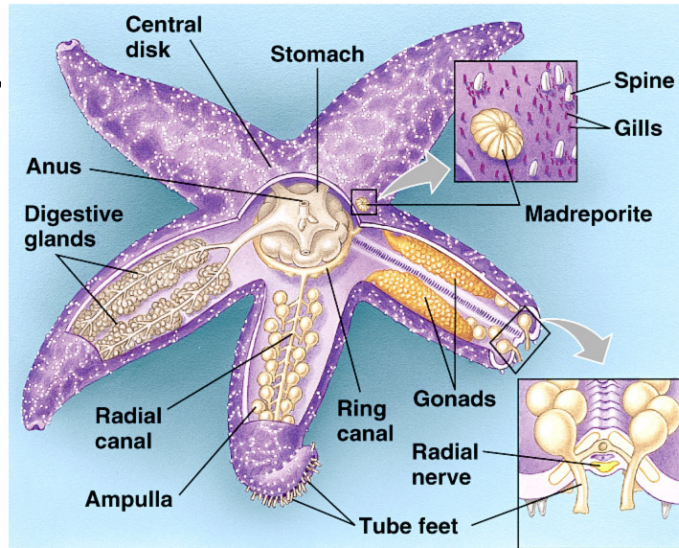
endoskeleton



Copyright 2009 pholibrary.com

Chap 11 Sec 5

internal organs of an  
echinoderm water vascular system some can contract  
can move fluid around



Copyright © Pearson Education, Inc., publishing as Benjamin Cummings.

Chap 11 Sec 5

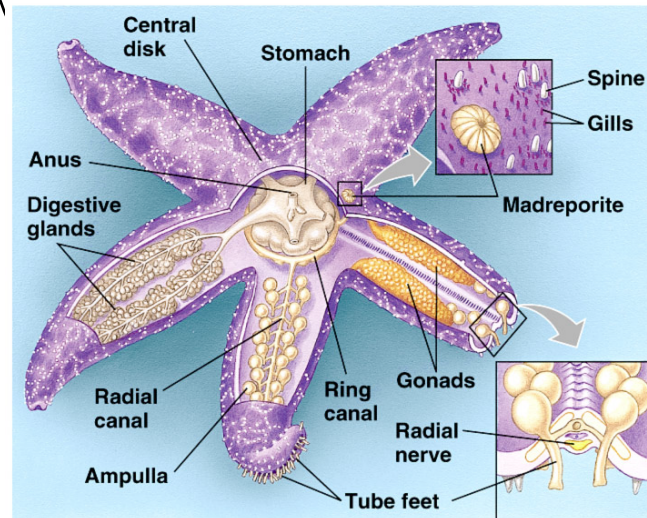
ends are sticky

tube feet

when filled with water they act like suction cups

move slowly to capture food

grip the surface



Copyright © Pearson Education, Inc., publishing as Benjamin Cummings.